



## 1x4 LED PENDANT

### CIRCADIAN AUTONOMOUS LIGHT FIXTURE

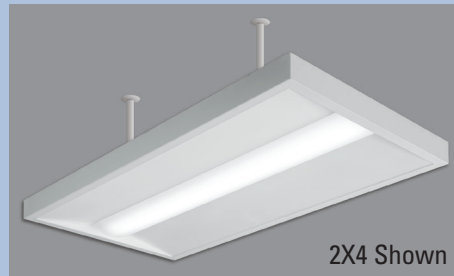
- Product optimized using human subject testing in 24/7 simulation of 12 hour day and night shifts in our a medical research facility.
- Provides bright white light 24/7 with the precise wavelength spectrum day and night to optimize health and performance.
- Intelligent control boards pre-programmed for the life of the fixture providing the correct blue light regulation for the location (latitude and longitude), season and leap years for optimized circadian effectiveness.
- Offers energy efficiency while reducing the harmful blue-rich light at night emitted by conventional LEDs that has been shown to increase risk of obesity, diabetes, cancer and depression.
- Light spectrum optimized to increase energy, productivity, mood, reduce fatigue and errors.
- Lumens output maintained over each 24 hour period and meeting specific industry work space illumination standards.
- Continuous bright white light with an im perceptible Day to Night Mode transition.
- Offers a more effective solution that maximizes health, productivity, and safety, as opposed to traditional color tuning solutions that rely on yellowing and dimming the light.

## INTELLIGENT LIGHTS Illuminated by Medical Science

### CIRCADIAN LIGHT BENEFITS

- Increased Alertness
- Increased Vigilance
- Mood Improvement
- Increased Productivity

### SURFACE MOUNT



### INTEGRAL OCCUPANCY SENSOR



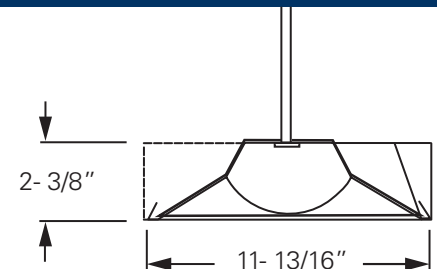
### FIXTURE PERFORMANCE DATA

Nominal Lumen Output	Wattage	Average Luminaire Efficacy (lm/W)	CCT (k)	CRI	MAX WATTAGE
<b>1' X 4' UNIT</b>					
2200-3200	35	103	3100-4200	80	55

### 1x4 CIRCADIAN PENDANT

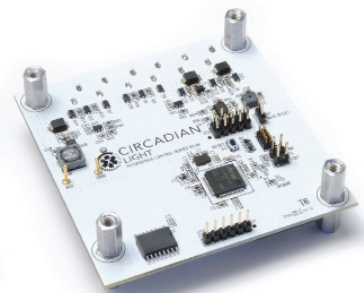


### SIDE VIEW

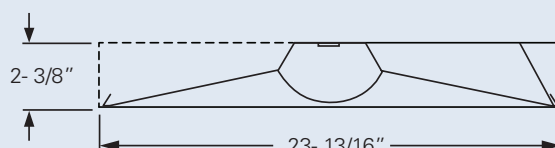
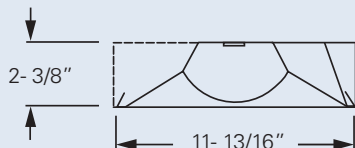


**Pendant Options:** Chain, Cable, Airplane Cable

# 1x4 LED PENDANT



## CROSS SECTIONS



## ORDERING INFORMATION

### CIRCADIAN SERIES

**CPT** Shallow Plenum LED Troffer

### NOMINAL WIDTH

- 1 1' (4' length only)
- 2 2'

### NOMINAL LENGTH

- 2 2' (2' length only)
- 4 4'

### DIFFUSER

**RA** Diffuse ribbed acrylic

### OPTIONS

- EQ CLIPS** Earthquake clips (4 per fixture)
- OCC** Integral occupancy and daylight sensors

### ACCESSORIES

Surface mount kit for CPT, 1' x 4', white  
 Surface mount kit for CPT, 2' x 2', white  
 Surface mount kit for CPT, 2' x 4', white  
 Pendant option for CPT, 1' x 4', white  
 Pendant option for CPT, 2' x 2', white  
 Pendant option for CPT, 2' x 4', white

### CONTROL OPTIONS

Additional dimming drivers available,

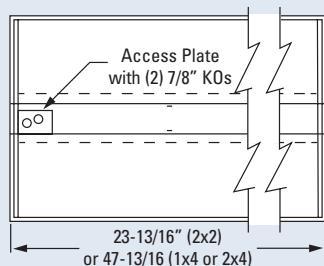
**DIM** Driver prewired for 0-10V low voltage dimming applications

### VOLTAGE

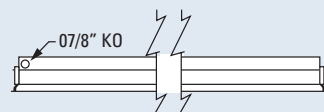
**UNV** 120V-277V

## FIXTURE DETAILS

### BACK VIEW



### SIDE VIEW



## SPECIFICATIONS

- Limited 5-Year Warranty
- UL1598 Listed
- DLC: Average efficiency targeted to meet DLC standard
- 3100K – 4200K CCT
- CRI 80
- Nominal lumens 3500
- L70 at 50,000 hours
- cCSAus certified as luminaire suitable for dry or damp locations
- Matte white paint and frosted lens provide pleasing architectural aesthetics with non-glare reflective surfaces
- Access to the electrical from room-side of fixture
- Heavy duty C.R.S. construction
- Mounted in NEMA Type G enclosure with surface mount accessory
- Housing /Reflector – precision die-formed 22 gauge C.R.S.
- Shallow housing depth for plenum space
- Slim 2-3/8th" depth
- Room-side Access
- All parts painted after fabrication to facilitate installation, increase efficiency and inhibit corrosion
- Comes with multiple diffuser options for color adjustment and maximum circadian effectiveness
- Troffers and Pendants are available in 1x4, 2x2, 2x4 configurations
- Rated for indoor locations, FCC and RoHS compliant
- Non-IC Rated
- Easy Installation

### Enhanced Visual

- Uniform ambient illumination
- Ribbed lens for enhanced visual comfort